

## A4GALT Ab

Cat.#: DF9602  
Size: 100ul,200ul

Concn.: 1mg/ml  
Source: Rabbit

Mol.Wt.: 40 kDa  
Clonality: Polyclonal

Application: WB 1:1000-3000

Reactivity: Human,Mouse,Rat

Purification: The antiserum was purified by peptide affinity chromatography using SulfoLink™ Coupling Resin (Thermo Fisher Scientific).

Specificity: A4GALT Ab detects endogenous levels of total A4GALT.

Immunogen: A synthesized peptide derived from human A4GALT.

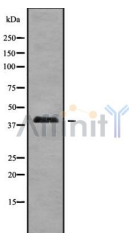
Uniprot: Q9NPC4

Subcellular Location: Golgi apparatus membrane.

Tissue Specificity: Ubiquitous. Highly expressed in kidney, heart, spleen, liver, testis and placenta.

Similarity: The conserved DXD motif is involved in enzyme activity.Belongs to the glycosyltransferase 32 family.

Storage Condition and Buffer: Rabbit IgG in phosphate buffered saline , pH 7.4, 150mM NaCl, 0.02% sodium azide and 50% glycerol.Store at -20 °C.Stable for 12 months from date of receipt.



Western blot analysis of A4GALT using K562 whole cell lysates

**IMPORTANT:** For western blot, incubate membrane with diluted primary Ab in 5% w/v milk , 1X TBS, 0.1% Tween@20 at 4°C with gentle shaking, overnight.

For Research Use Only. Not for use in diagnostic and therapeutic procedures. Not for resale without express authorization.